



Bluehorn High Yield - USD

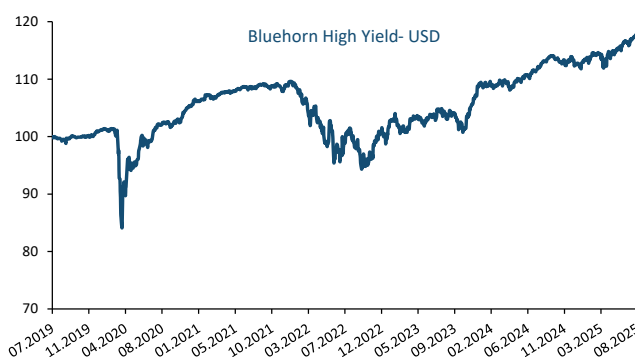
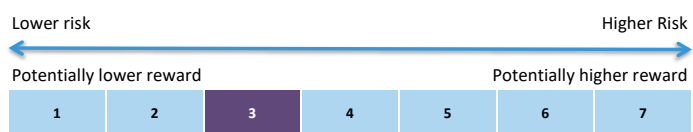
Marketing communication as of : 31.08.2025

Investment Universe and Investment Objectives

ISIN: CH0484998791

NAV 117.909

The investment objective of the certificate is to seek long-term capital growth and income by investing in a debt portfolio of fixed/floating income instruments. The investment manager will select debt securities or issuers to build a portfolio with an overall average credit quality of High Yield. In order to reach its objective, the certificate will mainly invest in debt instruments (public and corporate issuers, short/long maturity bonds, fixed/variable rate securities, senior/subordinated debt, inflation-linked securities, perpetual bonds, investment grade/high yield bonds, convertible bonds, ETFs), derivatives, money market Instruments, cash and cash equivalents.



Source : Weisshorn Asset Management

The Bluehorn High Yield certificate is a long term Fixed Income investment vehicle suitable for long term investors (3-year minimum holding horizon).

Annual Performance net of fees *													
	January	February	March	April	May	June	July	August	September	October	November	December	YTD
2020	0.10%	-0.89%	-8.08%	3.58%	2.62%	0.20%	3.57%	0.89%	-0.49%	0.39%	2.54%	1.05%	5.05%
2021	0.38%	0.11%	0.73%	0.39%	0.14%	0.59%	0.06%	0.32%	-0.18%	-0.03%	-0.82%	1.60%	3.31%
2022	-1.84%	-1.25%	-1.35%	-4.03%	1.39%	-4.67%	3.48%	-2.49%	-3.56%	2.15%	3.80%	-0.76%	-9.17%
2023	3.56%	-1.80%	1.79%	0.59%	-1.04%	1.33%	0.87%	-0.32%	-1.67%	-1.28%	4.86%	2.65%	9.69%
2024	0.15%	-0.23%	0.92%	-1.15%	1.29%	0.60%	1.42%	1.24%	0.83%	-0.96%	0.06%	-0.33%	3.22%
2025	0.54%	0.76%	-0.16%	0.43%	0.66%	1.34%	0.42%	0.83%					4.60%

Top 10 Issuers

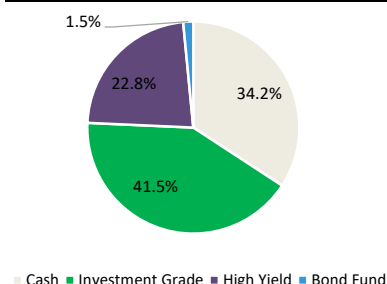
Weight

iShares iBoxx \$ Investment Gra	19.6%
iShares iBoxx \$ High Yield Cor	8.1%
FORD MOTOR CREDIT CO LLC	2.1%
NETFLIX INC	2.1%
ROCHE HOLDINGS INC	2.1%
NATIONWIDE BLDG SOCIETY	2.1%
MARRIOTT INTERNATIONAL	2.0%
SOFTBANK GROUP CORP	1.9%
KUWAIT PROJECTS CO SPC L	1.9%
iShares China CNY Bond UCITS E	1.9%

43.7%

Source : Weisshorn Asset Management

Asset breakdown



Source : Weisshorn Asset Management

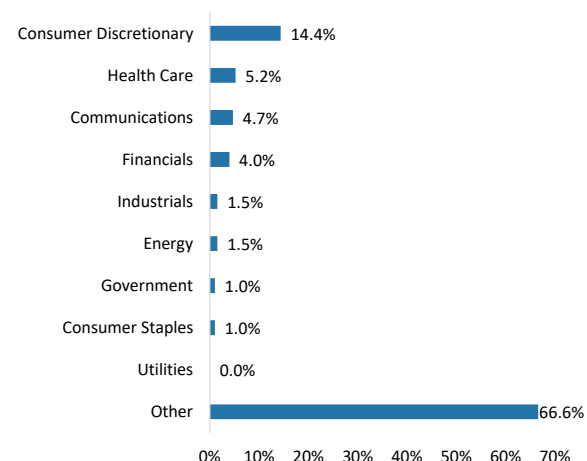
Key Figures

Annualized volatility	6.83%
Maximum Drawdown	-17.06%
Perf Since Inception	17.91%
1 Year performance	4.28%
3 Years performance	20.18%
Modified Duration	0.99
YTM	4.81
Average Rating Linear	BBB+
Average Rating Default Prob.	BBB-

The volatility is calculated on a daily basis and maximum drawdown on a monthly basis.

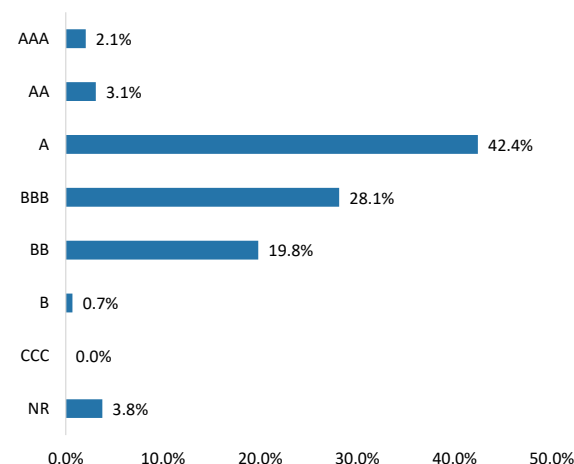
Source : Weisshorn Asset Management

Sectors Breakdown



Source : Weisshorn Asset Management

Rating Breakdown



Source : Weisshorn Asset Management

The beginning of August was somewhat volatile, with the announcement of 15% tariffs against the EU and Japan, in addition to revisions of employment figures. However, the market seems to have already absorbed much of this news and, against a backdrop of strong earnings releases and positive news coming from Jackson Hole, equities managed to post positive performances for the month.

On the macroeconomic side, the Jackson Hole meeting was the key event of August. After several days of discussions, we heard a speech from Mr. Powell, who confirmed that the FED's monetary policy might need to be adjusted. Indeed, although the Labor market is "strangely" balanced, the risk of rising unemployment is now considered greater than that of a resurgence in inflation. Following this speech, the bond market immediately adjusted and now anticipates a rate cut in September with a 90% probability. However, the long end of the yield curve continued to climb, thereby supporting its steepening. Equity markets welcomed the news, as lower rates imply cheaper debt financing for companies and greater ease in refinancing.

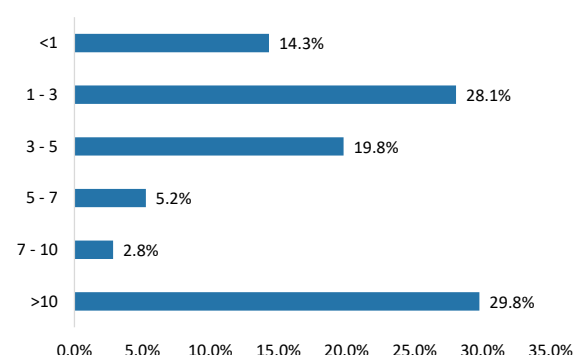
On the corporate side, earnings once again exceeded analysts' expectations. The market eagerly awaited Nvidia's results to determine whether there were signs of a slowdown in the Artificial Intelligence sector. To everyone's surprise, Nvidia beat expectations in both sales and earnings, reassuring investors. However, the weak spot came from China, where sales disappointed. The trade war between the US and China is hurting US Semiconductor companies. China is striving to reduce its reliance on US technology, while the US restricts companies from selling their most advanced technologies, limiting access to a significant portion of the market.

In this environment, the Bluehorn HY Certificate appreciated by 0.711%, representing a 4.6% increase since the beginning of the year.

Both the IG (+45 bps) and HY (+26 bps) segments contributed positively. Our short puts on HYG and LQD will expire in September and, barring any unpleasant surprises, should end up at zero.

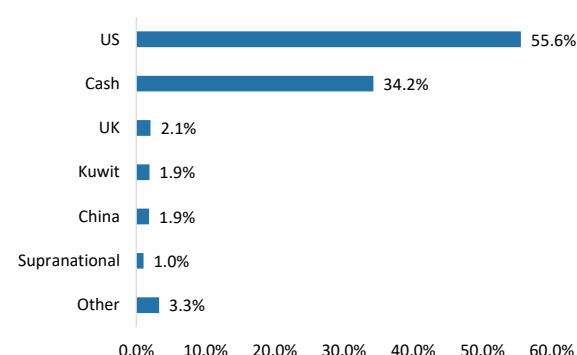
As the portfolio is positioned for the current economic environment, we have not made any reallocations. A potential widening of spreads would be an opportunity to buy back credit at a good price.

Maturity



Source : Weisshorn Asset Management

Country



Source : Weisshorn Asset Management

Key Data

Issuer	Bank Vontobel AG 8098 Zürich	Share classes	Bluehorn High Yield USD	Currency	USD	ISIN	CH0484998791	NAV	117.909
Custodian	Bank Vontobel AG 8098 Zürich	Asset Under Management	10.5 Mios USD						
Portfolio Advisor	Weisshorn Asset Management 7 rue des Alpes CH 1211 Geneve 1 Switzerland www.weisshorn-am.com +41 22 316 03 30	Issuer Fee	0.40%						
		Advisory Fee	1.20%						
		Fund legal Type	Actively Managed Certificate						
		Legal Status	Open-ended						
		Initial Fixing Date	02.07.2019						
		Dividend distribution policy	Capitalised						
		Subscription/ Redemption	Daily / Daily						
		Minimum investment	1 share						

Disclaimer : This is a marketing communication. Please refer to the prospectus and information document of the fund before making any final investment decisions. You can obtain a summary of investors rights to the following link: <https://www.group.pictet/media/sd/176b100ab205a6e6aef82b0250138f889675b903>. Future performance is subject to taxation which depends on the personal situation of each investor and which may change in the future. Returns may increase or decrease as a result of currency fluctuations. The prospectus, the Key Investor Information Document („KIID”), the articles of incorporation and the most recent annual or semi-annual report and after seeking the advice of an independent finance, legal, accounting and tax specialist. Interested parties may obtain the abovementioned documents free of charge from the authorized distribution agencies and from the offices of the Fund at 15, avenue John F. Kennedy, L-1855 Luxembourg. This document is made available exclusively to clients of Weisshorn Asset Management under discretionary portfolio management who has expressly requested to receive such information and documents (such as analysis, research, report, commentary and/or fact sheet). It shall not be communicated to any third party. The information and opinions (including positioning) contained on this document are for information purposes only and is not a solicitation, offer or recommendation to sell or acquire any securities, effect any transaction or to enter into any legal relations. More particularly, no information, document or opinions (including positioning) provided on this website regarding services or products shall constitute or be construed as an offer or solicitation to sell or acquire securities or other instruments in any jurisdiction where such offer or solicitation is prohibited by law or in which the person making an offer or solicitation is not licensed or registered to do so or to any person to whom such offer or solicitation is contradictory to local law or regulation. Any such prohibited offer or solicitation is void and Weisshorn Asset Management will disregard any communication received in respect thereof. Past performance should not be taken as an indication or guarantee of current or future performance, and no representation or warranty, express or implied, is made regarding future performance. Clients are urged to be assisted by professionals to assess the possibilities and risks associated with any financial operation before making any investment or other decisions.

Frontier markets: Within emerging markets, those that are particularly small, new or under-developed.	Correlation and annualised volatility: Correlation shows how a fund's return moves in relation to the benchmark. Highly correlated investments tend to move up and down together while this is not true for investments with low correlation. Standard deviation or annualised volatility is a measure of historical volatility. It is calculated by comparing the average return with the average variance from that return.
Emerging markets: Markets of less economically developed nations, such as some nations in Asia, Africa, Eastern Europe and Latin America.	Standard deviation: Standard deviation or annualised volatility is a measure of historical volatility. It is calculated by comparing the average return with the average variance from that return.
Bonds: Securities that represent an obligation to repay a debt, with interest. Below investment-grade bonds generally pay higher interest rates but are considered less likely to make all scheduled payments.	Maximum drawdown: The largest loss measured from peak to trough until a new peak is attained.
Convertible bonds: Bonds that offer the holder the option of receiving the payment of principal in either cash or a certain number of shares.	Ongoing charges (OCR): Ongoing charges are based over 12 months of expenses ending the 31 December of the previous year. It is annually updated, but may be adjusted more frequently.
Contingent convertible bonds (CoCos): Convertible bonds that offer the potential for high interest and capital gains, in exchange for higher risk of loss.	Sharpe ratio: The Sharpe ratio shows the fund's risk-adjusted performance. It is calculated by dividing the excess return (portfolio return minus risk free return) by the volatility.
Convertible debt securities: Debt securities that offer the holder the option of receiving the payment of principal in either cash or a certain number of shares.	Tracking error: The volatility of the fund's excess returns over its benchmark returns. It quantifies how closely a manager's return pattern follows that of the benchmark.
Asset-backed securities: A type of debt security backed by receivables (such as credit card debt) and typically carrying above-average risk.	Derivatives risk: Certain derivatives could increase Sub-Fund volatility or expose the Sub-Fund to losses greater than the cost of the derivative.
Debt securities: Securities that represent an obligation to repay a debt, along with interest.	Counterparty risk: The Sub-Fund could lose money if an entity with which it does business becomes unwilling or unable to honor its commitments to the Sub-Fund.
Equities: Securities that represent a share in the business results of a company.	Management risk: Portfolio management techniques that have worked well in normal market conditions could prove ineffective or detrimental during unusual conditions.
Derivatives: Financial instruments whose value is linked to one or more rates, indexes, share prices or other values.	Credit risk: Prices of a debt security may fall if the issuer's creditworthiness deteriorates, or if investors believe it may do so. This risk tends to be greater with lower quality debt securities. In extreme cases, an issuer's securities could become worthless if it fails to make timely debt service payments.
Money market instruments: Financial instruments designed to provide stable value, interest and a very low risk of loss, as well as being readily convertible into cash.	Operational risk: In any market, but especially in emerging markets, the fund could lose some or all of its money through a failure in asset safekeeping or through fraud, corruption, political actions or any other unexpected events.
Option: Financial instruments that offer the right to buy (call option) or sell (put option) shares at a certain price	Liquidity risk: Certain securities could become hard to value, or to sell at a desired time and price.
Commodities: A category that includes metals, building materials, fuels and food ingredients.	
Alpha: Alpha shows the percentage performance of a fund above or below that explained by its exposure to the broader market.	
Beta: Beta shows the average extent a fund's return moves relative to the broader market. A fund with a beta above 1 moves on average more than the market and below 1 moves on average less than the market.	
Cut-off: Deadline for remittance of orders to the transfer agent in Luxembourg as set out in the relevant annexes to the prospectus. You may be required to submit your orders to your financial advisor or fund distributor by an earlier cut-off time.	